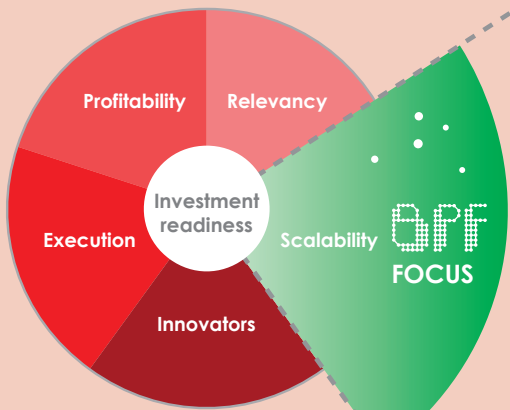


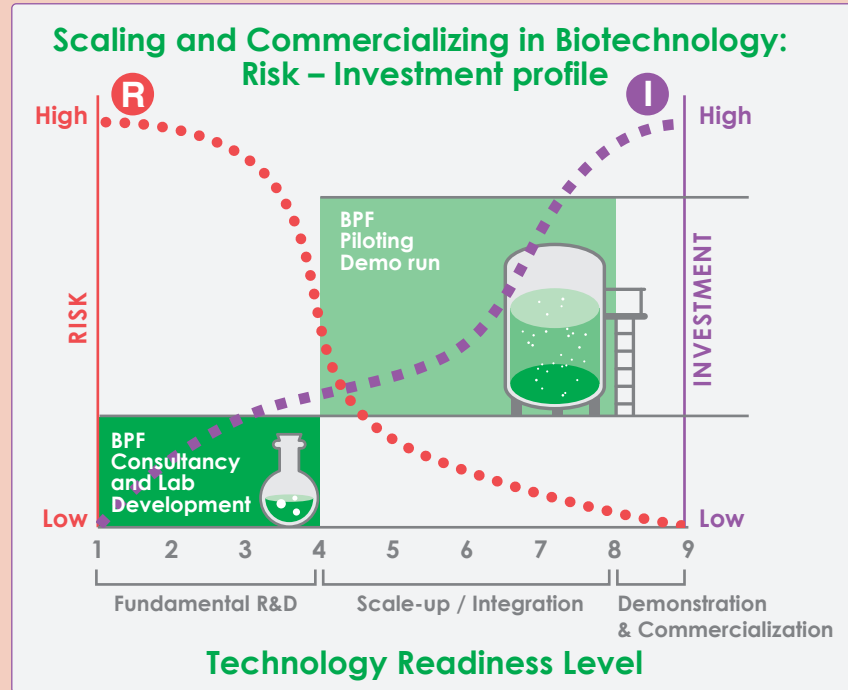
## Value Proposition

For investors, start-ups and corporates, the Bioprocess Pilot Facility provides an assessment for Technical Due Diligence (TDD). BPF offers a wealth of knowledge, experience and skills to assess and evaluate your industrial biotech business case. Unlike universities, research companies and other scale-up service providers, the BPF team offers true industrial thinking on a smaller scale.



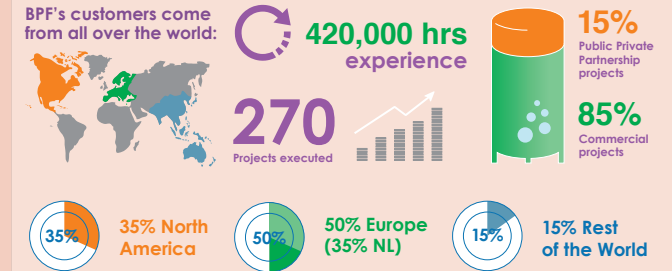
## Technologies at BPF

- Biomass valorization : agricultural and lignocellulosic biomass
- Microbial fermentation
- Downstream processing, isolation and purification

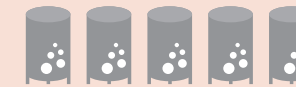


## BPF's infographics

More BPF infographics are available on [www.bpf.eu](http://www.bpf.eu)

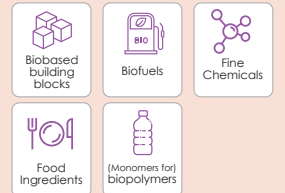


5x



New commercial plants we helped in realizing or are helping to be realized

### PRODUCTS WE WORKED ON:



### BIOMASSES WE VALORIZED:



### Consultancy and Lab Development

Typical lead time 2-3 weeks

#### BENEFITS

- TRL < 4: add industrial scale thinking
- Reduce costs and shorten time-to-market

#### DELIVERABLES

- Report on technical scalability to pilot scale
- Initial check on:
  - gaps and white spots
  - economic viability & potential process risks (partnered)
  - IP, freedom to operate
- Initial assessment of skills & competences of technical team



### Piloting / demo run

Typical lead time 3 months

#### BENEFITS

- TRL 4-8: Independent proof of concept executed at pilot scale
- Established process design (partnered)

#### DELIVERABLES

- Report and data set on technical readiness for commercial scale production
- Reviewed Process Flow Diagram's, mass balances, operational metrics, process data and technical transfer reports (for commercial scale production, CMO)
- Check of cost competitiveness for commercial scale production (partnered)



## Your Benefits

- Assessment of
- Scalability for commercial scale feasibility
  - De-risking investments
  - Shortening time-to market